

# C310A REBAR CORROSION DETECTOR

## Rebar Corrosion Detector



The C310A provides the ability to examine the **corrosion potential and to localise active corrosion in rebar** in building structures. The procedure is virtually non-destructive and is performed by carrying out a grid based measurement.

The **C310A Rebar Corrosion Detector** is a specialized apparatus designed according to the **electrochemical testing method** (natural potential method). C310A tests the potential of concrete surfaces through a Cu/CuSO4 reference electrode, and **determines the level of rebar corrosion**.



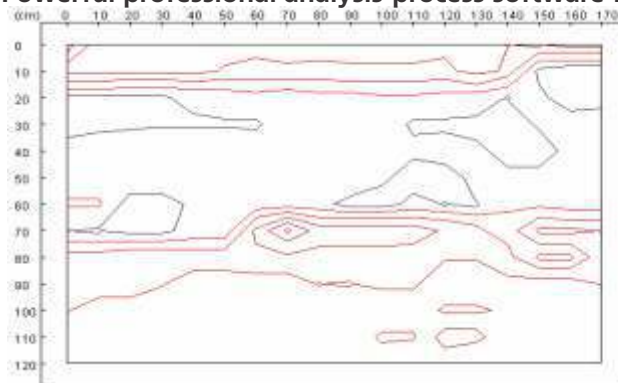
### Features:

The C310A includes a two electrode handle system which provides flexibility for the operator to:

- **Test using one electrode based on half cell potential method.**
- **Test using two electrodes based on gradient method. In both cases, electrodes used are copper sulfate type.**
- Automatic storage option is available in instrument.
- Data transfer to USB-thumb drive is available.
- The device generates rebars corrosion potential contour graph.
- **Software Provided for Data Processing of Corrosion Potential Measurement** : Is an Easy to Use Powerful processing software provided for generation of reports. Operates on windows based computers.

### Software :

Powerful professional analysis-process software facilitates the generation of test reports automatically



### Technical Specifications :

Corrosion detection		
Corrosion detection method	Single electrode	Double electrode
Measuring Range	±1000mv	0 ~ 1000 mV
Accuracy	±1mV	
Tested points Interval X	0~100 adjustable	20 fixed
Tested points Interval Y	0~100 adjustable	0~100 adjustable
Power	Built-in rechargeable lithium battery	
Battery operating Time	>25 hours	
Dimensions	212mm x 134mm x 50mm	
Weight	0.9kg	
Data transmission	USB thumb drive storage	

**Product Supply includes:** C310A, Electrodes, Signal wire and Waterproof case.

